

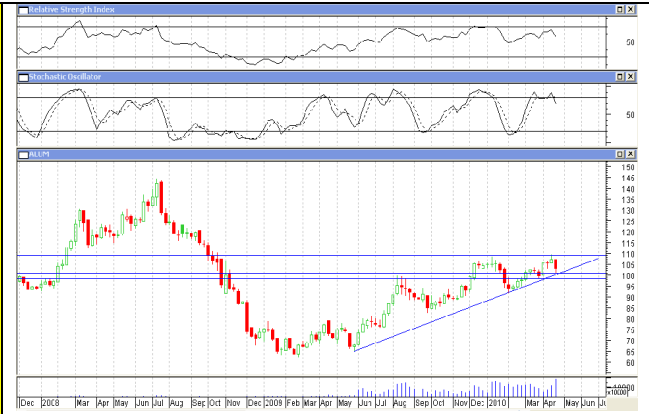
commodity trading strategy for April 26 to 01 may, 2010

COMMODITY NAME: ALUMINIUM

EXPECTATION:
ALUMINIUM ON THE WEEKLY CHART HAS FORMED A BEARISH LONG CANDLE AND ITS RSI & STOCHASTIC OSCILLATOR IS TURN DOWNWARDS FROM OVER BOUGHT ZONE. BUT PRICES ARE NEAR A STRONG TRENDLINE WHICH BEGAN ON 30/05/09 MORE OVER SLOWLY ALUMINIUM IS FORMING A ASCENDING TRIANGLE PATTERN. IT HAS STRONG REISITENCE AROUND 109 LEVELS

TRADING STRATEGY: FOR NEXT WEEK MCX ALUMINIUM CURRENT CONTRACT IS EXPECTED TO TRADE BETWEEN 100 TO 106 PRICE RANGE

CAUTIONS: AROUND MID MAY ALUMINIUM CAN SEE A HEAVY SELLING PRESSURE.



COMMODITY NAME: COPPER

EXPECTATION:
COPPER ON THE WEEKLY CHART IS SHOWING SIGN OF WEEKNESS AS FOR THE LAST THREE WEEK IT IS FORMING BEARISH CANDLES. ITS RSI AS WELL AS STOCHASTIC INDICATOR IS MOVING DOWNWARDS. ON DOWNSIDE IT IS ALSO FOLLOWING DOWN TRENDLINE BEGAN ON 10/04/10. BUT IT HAS SUPPORT AT 334 LEVELS

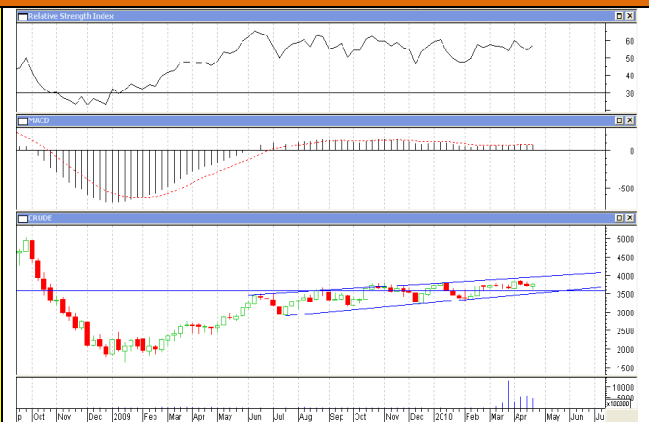
TRADING STRATEGY: FOR COMING WEEK MCX COPPER CURRENT CONTRACT IS EXPECTED TO TRADE BETWEEN 334-349 PRICE RANGE



COMMODITY NAME: CRUDEOIL

EXPECTATION:
CRUDEOIL ON THE WEEKLY CHART HAS FORMED A BULLISH HANGINGMAN CANDLE. IT IS FINDING SUPPORT AT 3585 LEVELS WHERE IT HAS THIS WEEK FORMED A DOUBLE BOTTOM SIGN OF BULLISHNESS . ITS MACD INDICATOR IS ALSO ABOVE ZERO LINE AND ITS RSI INDICATOR HAS TURN UP.

TRADING STRATEGY: FOR NEXT WEEK MCX CRUDE CURRENT CONTRACT IS EXPECTED TO TRADE BETWEEN 3585 – 3820 PRICE RANGE.



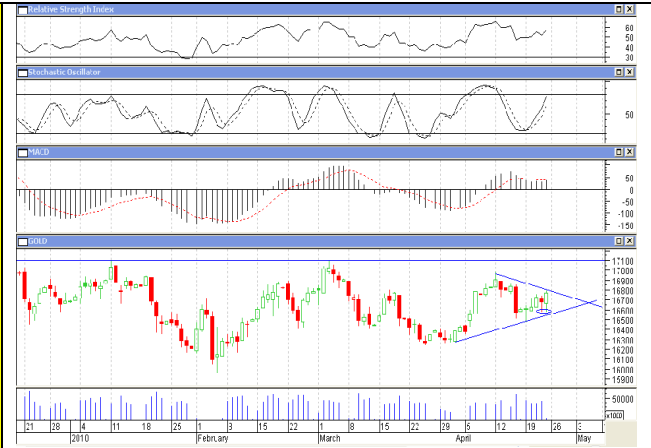
commodity trading strategy for April 26 to 01 may,2010

COMMODITY NAME: GOLD

EXPECTATION:

GOLD ON THE WEEKLY CHARTS IS SHOWING SIGN OF STRENGTH THIS WEEK . ITS RSI INDICATOR IS MOVING UPWARDS AND MACD SIGNAL IS ALSO POSITIVE . MOREOVER IT HAS FORMED DOUBLE BOTTOM AT PRICE 16575 SIGN OF BULLISHNESS

TRADING STRATEGY: FOR THIS WEEK MCS GOLD CURRENT CONTRACT IS EXPECTED TO TRADE BETWEEN PRICE RANGE OF 16600-16850



Disclaimer: This report is for the personal information of the authorized recipient and doesn't construe to be any investment, legal or taxation advice to you. It is only for private circulation and use .The report is based upon information that we consider reliable, but we do not represent that it is accurate or complete, and it should not be relied upon as such. No action is solicited on the basis of the contents of the report. The report should not be reproduced or redistributed to any other person(s) in any form without prior written permission of Brokers.. The contents of this material are general and are neither comprehensive nor inclusive. Neither nor any of its Brokers affiliates, associates, representatives, directors or employees shall be responsible for any loss or damage that may arise to any person due to any action taken on the basis of this report. It does not constitute personal recommendations or take into account the particular investment objectives, financial situations or needs of an individual client or a corporate/s or any entity/s. All investments involve risk and past performance doesn't guarantee future results. The value of, and income from investments may vary because of the changes in the macro and micro factors given at a certain period of time. The person should use his/her own judgment while taking investment decisions . Please note that we and our affiliates, officers, directors, and employees, including persons involved in the preparation or issuance if this material;(a) from time to time, may have long or short positions in, and buy or sell the commodities thereof, of company (ies) mentioned here in or (b) be engaged in any other transaction involving such securities and earn brokerage or other compensation or act as a market maker or (c) may have any other potential conflict of interest with respect to any recommendation and related information and opinions. All disputes shall be subject to the exclusive jurisdiction of Delhi High court.