

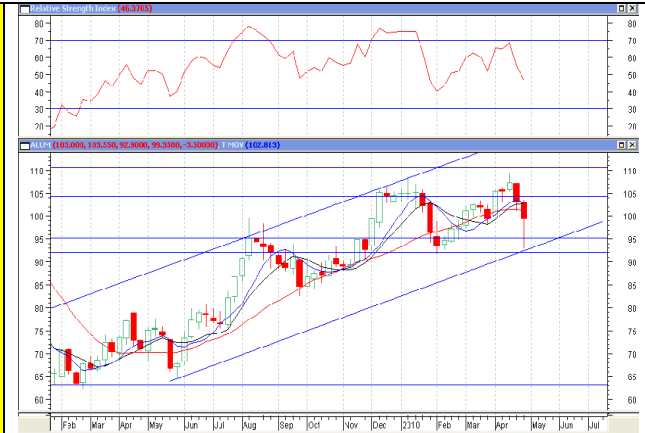
commodity trading strategy for May 3 to 8 may,2010

COMMODITY NAME: ALUMINIUM

EXPECTATION:
ALUMINIUM ON THE WEEKLY CHART HAS FORMED A HANGINGMAN CANDLE AND ITS RSI & STOCHASTIC OSCILLATOR ARE MOVING DOWNWARDS. ITS 6,9,18 DAYS ALL MA ARE POINTING DOWNWARDS.

TRADING STRATEGY: FOR NEXT WEEK MCX ALUMINIUM MAY CONTRACT IS EXPECTED TO TRADE BETWEEN 95 TO 103 PRICE RANGE

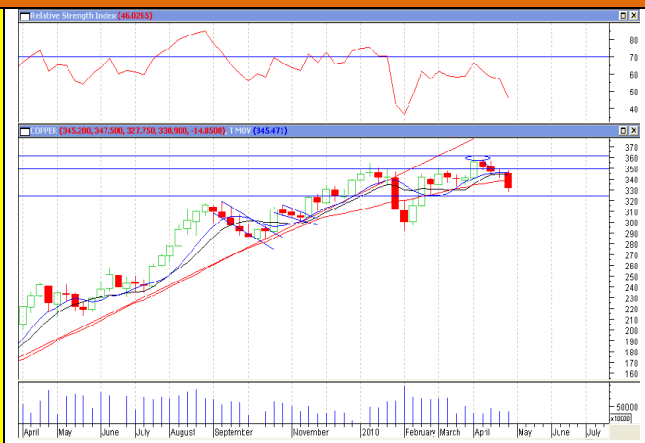
CAUTIOUS: AS PREDICTED LAST WEEK ALUMINIUM HAS SEEN HEAVY SELLING PRESSURE WHICH MIGHT CONTINUE TILL MID MAY



COMMODITY NAME: COPPER

EXPECTATION:
COPPER ON THE WEEKLY CHART IS SHOWING SIGN OF WEEKNESS AS FOR THE LAST FOUR WEEK IT IS FORMING BEARISH CANDLES. ITS RSI INDICATOR IS MOVING DOWNWARDS. ON DOWNSIDE IT IS ALSO FOLLOWING DOWN TRENDLINE BEGAN ON 10/04/10. IT HAS SUPPORT AT 324 LEVELS

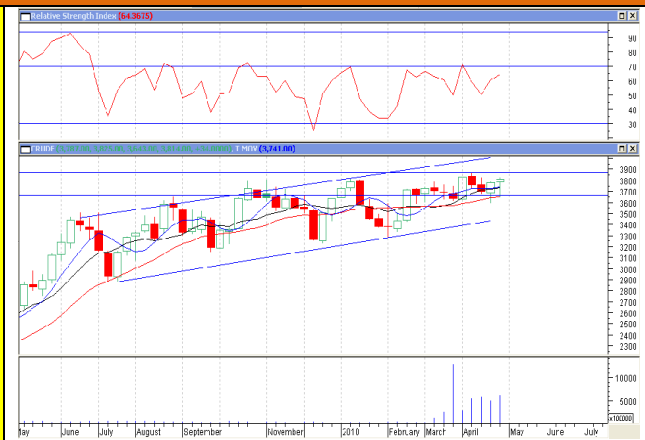
TRADING STRATEGY: FOR COMING WEEK MCX COPPER JUNE CONTRACT IS EXPECTED TO TRADE BETWEEN 324-340 PRICE RANGE



COMMODITY NAME: CRUDEOIL

EXPECTATION:
CRUDEOIL ON THE WEEKLY CHART HAS FORMED A BULLISH HANGINGMAN CANDLE. ITS MACD INDICATOR IS ALSO ABOVE ZERO LINE AND ITS RSI INDICATOR HAS TURN UP. BUT IT HAS RESISTANCE AT 3875 LEVELS. MOMENTUM IS TOWARDS UPSIDE.

TRADING STRATEGY: FOR NEXT WEEK MCX CRUDE MAY CONTRACT IS EXPECTED TO TRADE BETWEEN 3700 – 3875 PRICE RANGE.



commodity trading strategy for May 3 to 8 may,2010

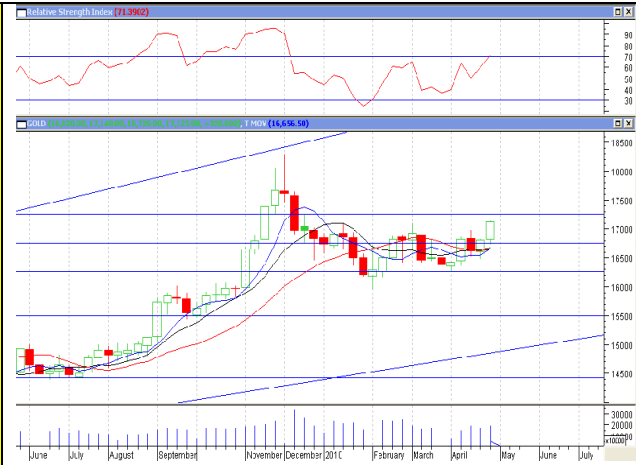
COMMODITY NAME: GOLD

EXPECTATION:

GOLD ON THE WEEKLY CHARTS IS SHOWING SIGN OF STRENGTH THIS WEEK . ITS RSI INDICATOR IS MOVING UPWARDS AND MACD SIGNAL IS ALSO POSITIVE . MOREOVER IT IS TRYING TO FORM CROW CANDLE PATTERN WHICH MIGHT BE COMPLETED BY NEXT WEEK

TRADING STRATEGY: FOR THIS WEEK MCX GOLD JUNE CONTRACT IS EXPECTED TO TRADE BETWEEN PRICE RANGE OF 16800-17280

CAUTIONS: IN MID MAY GOLD MIGHT SEE HUGE SELLING PRESSURE



COMMODITY NAME: LEAD

EXPECTATION:

LEAD ON THE WEEKLY CHART HAS FORMED ALMOST DOUBLE BOTTOM AT 97 LEVELS . BUT IT IS NOT ABLE TO BREAK DOWNWARD TRENDLINE BEGAN ON 16/01/10 AND ITS RSI INDICATOR IS MOVING DOWNWARDS.

TRADING STRATEGY: FOR THIS WEEK MCX LEAD MAY CONTRACT IS EXPECTED TO TRADE BETWEEN 97-103 ZONE

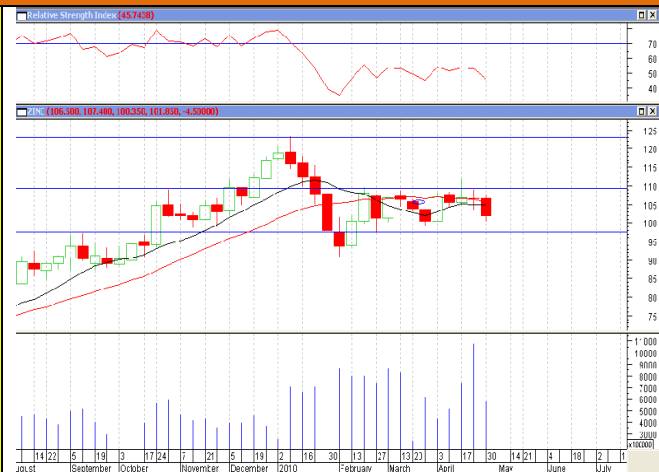


COMMODITY NAME: ZINC

EXPECTATION:

ZINC ON THE WEEKLY CHART IS SHOWING WEAKNESS AS IT HAS FORMED A LONG BEARISH CANDLE AND ITS RSI INDICATOR IS MOVING DOWNWARDS.

TRADING STRATEGY: FOR THIS WEEK MCX ZINC MAY CONTRACT IS EXPECTED TO TRADE BETWEEN 97.5-105.5 ZONE



commodity trading strategy for May 3 to 8 may,2010

Disclaimer: This report is for the personal information of the authorized recipient and doesn't construe to be any investment, legal or taxation advice to you. It is only for private circulation and use. The report is based upon information that we consider reliable, but we do not represent that it is accurate or complete, and it should not be relied upon as such. No action is solicited on the basis of the contents of the report. The report should not be reproduced or redistributed to any other person(s) in any form without prior written permission of Brokers.. The contents of this material are general and are neither comprehensive nor inclusive. Neither nor any of its Brokers affiliates, associates, representatives, directors or employees shall be responsible for any loss or damage that may arise to any person due to any action taken on the basis of this report. It does not constitute personal recommendations or take into account the particular investment objectives, financial situations or needs of an individual client or a corporate/s or any entity/s. All investments involve risk and past performance doesn't guarantee future results. The value of, and income from investments may vary because of the changes in the macro and micro factors given at a certain period of time. The person should use his/her own judgment while taking investment decisions. Please note that we and our affiliates, officers, directors, and employees, including persons involved in the preparation or issuance of this material;(a) from time to time, may have long or short positions in, and buy or sell the commodities thereof, of company (ies) mentioned here in or (b) be engaged in any other transaction involving such securities and earn brokerage or other compensation or act as a market maker or (c) may have any other potential conflict of interest with respect to any recommendation and related information and opinions. All disputes shall be subject to the exclusive jurisdiction of Delhi High court.